



How to clean a clogged extruder

Begin with disconnecting the printer, and removing the extruder.

(View Figures 1 through 4 below.) Then please refer to the steps below to clean the extruder head.

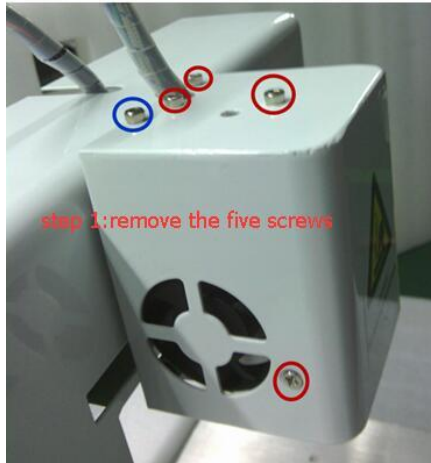


Fig 1.

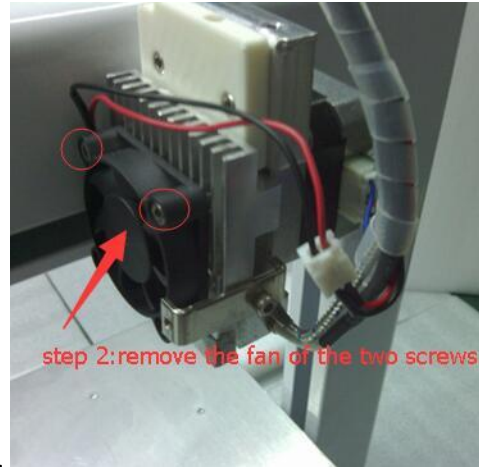


Fig 2.

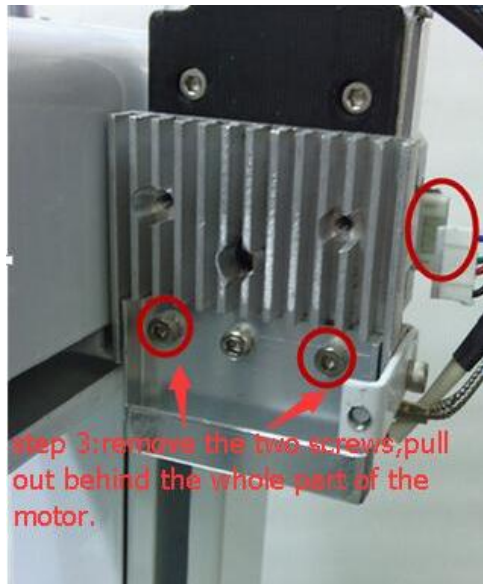


Fig 3.



Fig 4.

1. Get a couple of filaments about 8 inches in length and a small amount of vegetable oil.
2. If there is filament in the hot end, try to do a clean pullout of the filament that is in there. Typically for PLA, this means heating to 100-120 degrees and pulling the filament as soon as it can be pulled.
3. Heat the Hot end to about 230 degrees.
4. Dip one piece of filament in the vegetable oil and insert it into the hot end. Note that it will sizzle. Push until you get a couple of inches of filament extruded.
5. Remove that filament. Now push through a couple of inches of the other filament (without dipping it in oil). Remove that piece of filament as well.
6. Repeat with the oil and the unoled filament bits at least 2 or 3 times.